

# mcaa

July/August 2011

## michigan ceramic art association

# Michigan MUD 2011

## Washtenaw Community College (WCC)

### Ceramics Center of WCC, Ann Arbor, Michigan

### Friday & Saturday

### October 7 - 8, 2011

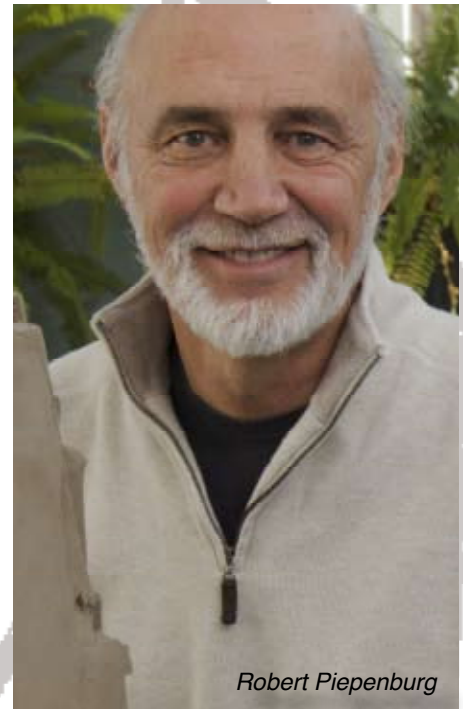
*MI MUD 2011 is coming together and it is going to be a good one!*

**ROBERT PIEPENBURG** from Ann Arbor Michigan is this years conference featured guest presenter. As a ceramic artist and author, Piepenburg's work is mainly raku. He was a recipient of a National Endowment for the Arts Fellowship and several Michigan Council for the Arts Creative Artist Grants. His works are in private and public collections from the Detroit Institute of the Arts to the Smithsonian in Washington, DC. His previous two books *Treasures of the Creative Spirit* and *The Spirit of Ceramic Design* won a total five book awards.

The conference will feature artists from the Ann Arbor area as well as from other regions in Michigan. The list of presenters include: *Jeremy Brooks, Graig Clifford, Jeri Hollister, Daria Kim, Paul Kotula, Debbie Kupinsky, Nicole Marroquin, Gail Piepenburg, Gregory Stahly, and Ian Thomas.*



The planning committee has worked hard to assemble a schedule that demonstrates diversity, not only in the way in which clay can be worked, but as importantly in the firing techniques. In addition to sessions covering more typical ways of finishing work, there will also be demonstrations and information about glazing and much more. This event presents a venue for



*Robert Piepenburg*

potters and artists in the state to come together to share skills and methods. Attendees will have an opportunity to explore the possibilities of clay art and have a chance absorb some of what is happening in Michigan ceramics. Clay enthusiasts, professionals, beginners and students of all levels are invited to collectively experience the ceramic diversity of Michigan.

*Snail mail registration forms pages 7-8.*

---

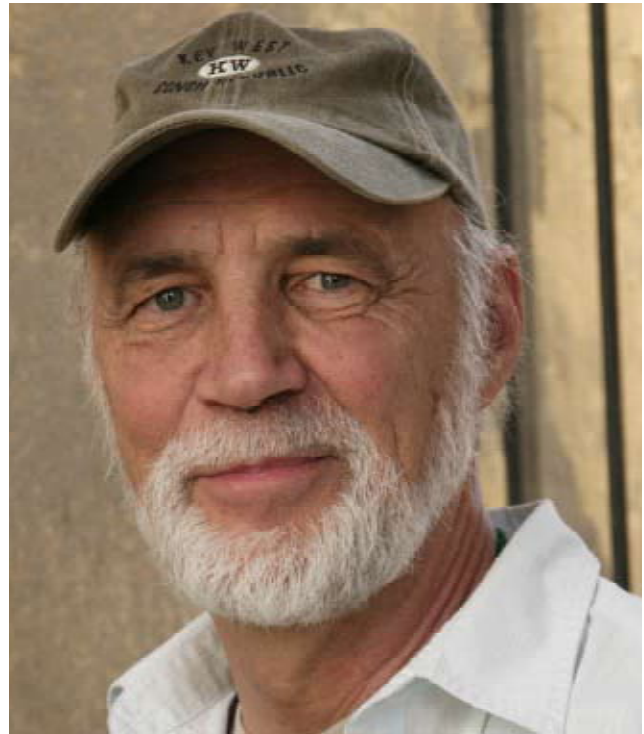
## MI MUD 2011 - GAIL & ROBERT PIEPENBURG



**GAIL PIEPENBURG**, a renowned artist whose art resonates with spirit-charging life energy. Gail's work appears in many contemporary ceramic books and she has won many awards. Her professional artistic experiences, along with many years as a teacher, have infused her being with profound meaning and insight. As an inherently creative and enthusiastic person, she is an extraordinarily gifted workshop leader.

Gail Piepenburg's handbuilding demonstration will show how she creates raku wall pieces from soft slabs of clay. Her working style is quick and done at a pace that infuses the artwork with personal bursts of creative energy. Throughout her working process she discusses her forming strategies and aesthetic philosophy while simultaneously articulating the critical roles various elements and principles of 3-D design play in the successful transformation from clay as material to clay as art.

Gail was born in Detroit, MI and received an Illustration degree from Kendall College of Art and Design before receiving a BFA degree and an MFA degree from Eastern Michigan University. She currently teaches ceramics and design full-time at Oakland Community College in Farmington Hills, Michigan. <http://www.piepenburgstudios.com>



### **ROBERT PIEPENBURG**

Keynote Speaker, Artist & Author

Robert Piepenburg was born in Detroit, MI and received his Bachelor's, Master's degree and MFA degree from Eastern Michigan University. He is the recipient of a National Endowment for the Arts Fellowship, three Michigan Council for the Arts Creative Artists Grants and an Outstanding Teacher of the Year award from Oakland Community College. His works appear in public and private collections from the Hawaii State Foundation on Culture and the Arts to the Smithsonian Institution in Washington, D.C. <http://www.piepenburgstudios.com>

Robert Piepenburg book signing at MI Mud 2011

#### ***The Spirit of Ceramic Design - Cultivating Creativity with Clay***

This book is a pivotal resource for all who work in clay. As the winner of two national book awards it is as unique as it is insightful in its understanding of the cause and effect relationships between human spirituality and quality design.

#### ***Treasures of the Creative Spirit - An Artist's Understanding of Human Creativity***

As an exploration of the universal connections between creativity and the human spirit, the second edition of this insightful book received three awards in the categories of Inspirational and Spirituality.

## MI MUD 2011 - Presenters



**JEREMY BROOKS** will discuss the progression of his artwork over the past ten years as it relates to integrating ceramics with mixed media and materials. Jeremy will speak about his influences and various material choices present in his studio practice. His lecture will also present the work of other like-minded ceramic artists whose work moves beyond the traditions and material constraints of clay, incorporates a variety of materials, and deals with issues greater than those typically addressed by the ceramics community.

Jeremy Brooks received his BFA from Grand Valley State University and his MFA from Alfred University. He has taught classes in the local community through Pewabic Pottery, and he has held academic appointments at Grand Valley State University, Michigan State University, and the University of Michigan. In 2011, Jeremy was awarded the title of Emerging Artist by The National Council on Education for the Ceramic Arts / NCECA. Jeremy currently resides in Hazel Park, MI and continues to exhibit his work both nationally and internationally.  
<http://klai-body.com>



**CRAIG CLIFFORD** will demo his slip cast, college construction techniques. In addition he will present his glazing techniques and talk about getting depth of color with cone 06 glazes. His pieces are made by the assemblage of hundreds of press molded, kitsch forms to create a texture in the forms that at first glance seems to be a mere surface, but draws the viewer in with slices of recognizable imagery. In his work he transform these hollow, commercial reproductions of 'art' to create his work. The forms themselves are cast from found objects like refined teacups and serving pieces from cast off china sets. For Craig, color acts as another layer for the work both hiding and accenting the texture and form. As an artist he works in assemblage and uses material culture to create works that recontextualize the familiar until it is transformed and unrecognizable. Craig Clifford currently teaches at the University of Wisconsin Oshkosh.  
[www.craigcliffordceramics.com](http://www.craigcliffordceramics.com)



**JERI HOLLISTER** demonstration will be the construction of a horse sculpture using thrown, extruded and slab elements. She will have the parts ready for construction as well as a piece in process. The demonstration will show and talk about all the steps from the base, to the internal clay armature, to adding the forms to create the body of the horse. It is Jeri's intention to complete the construction of a horse during the demonstration.

A native Michigander, Jeri has lived in Ann Arbor since coming to the University of Michigan for her BA in art history and MFA in ceramics. After graduation, she taught ceramics at Eastern Michigan University for 4 years. Jeri occasionally teaches at the Potters Guild in Ann Arbor where she is a member. In addition to teaching ceramics, Jeri exhibits her work nationally and has won numerous awards including best of show in Monarch Tile Company's National Competition and the purchase prize at Michigan Ceramics 2004.  
[www.jerihollister.com](http://www.jerihollister.com)



**Seeking CUPS & MUGS**  
Please donate  
**MCAA**  
**Scholarship Fundraiser**  
MI Mud 2011

## MI MUD 2011 - Presenters



### **DARIA KIM**

*Brush Making Workshop:*  
*Pre-registration required, \$10 additional for materials. Workshop limited to the first 20 who register for the workshop. If there are sufficient registrations a second workshop may be added.*

Those attending this workshop will make two brushes to take home. Daria has been making brushes for herself for many years and her brushes are now available at galleries and ceramic studios in Michigan. She tailors each brush by its original attributes and hairlines; no two are alike in shape or design. Hair is used from a variety of sources, including fox, mink, deer, horse or even skunk. The hair goes through an arduous process to ensure cleanliness and usability. For function, a lightweight handle is chosen for holding comfort, other handles are artwork in themselves with ornate deer horn or bone handles. Born and raised in Seoul, Korea Daria moved to the US in 1988 and attended the University of Alabama where she gained a foundation in ceramics. She is the studio technician for WCC's ceramic department, a member of the Ann Arbor Potter's Guild and teaches a variety of ceramic classes for adults and children in the Ann Arbor area.  
[www.dariawhitepottery.com](http://www.dariawhitepottery.com)



**PAUL KOTULA** received his Bachelor of Fine Arts from Wayne State University, Detroit, MI and his Master of Fine Arts degree from the New York State College of Ceramics at Alfred University in 1989. Currently he is an Assistant Professor in Ceramics at Michigan State University; owner and director of Paul Kotula Projects, a contemporary art gallery in suburban Detroit; and a practicing artist creating tableware.

The potential of utility and its social context, the abstract language of the pot, and clay's ability to accept such unique expressions fascinate Kotula. He has redefined ceramics and the use of clay in contemporary art practices and in creating tableware. The potential of utility and its social context, the abstract language of the pot, and clay's ability to accept such unique expressions fascinate Kotula. He has redefined ceramics and the use of clay in contemporary art practices and in creating tableware. Kotula's incredibly thoughtful surface treatments created through the use of glaze become inspired contemplative paintings. Matte surfaces in combination with shiny ones reflect light in different ways; a simply glazed line interacts with an organic shape of a different glaze color. Kotula removes all that is extraneous, reducing both form and surface to their most basic elements and greatly emphasizing the importance of each decision he makes. His sensitivity to his material choice, the strength and originality of his forms, and his beautifully designed compositions pay homage to the field of design.  
[www.paulkotula.com](http://www.paulkotula.com)



**DEBBIE KUPINSKY** will present figurative handbuilding and assemblage techniques in porcelain as a demonstration. Her work references the doll and emphasizes the metaphorical qualities of the figure as a way to talk about interior life and memory. The figures are coil-built porcelain and use both the interior and exterior space as well as exaggerated features and cast found objects to create loose narratives. The demonstration will include process images of building with coils and cast elements, as well as presenting images and examples of finished work. Debbie will partially prepare a large porcelain bust shape in advance and use the demonstration to create features and detail. In addition she'll use a separate piece to demonstrate building the basic forms and will talk about the figure as metaphor and the use of found objects as a symbol of nostalgia.

Debbie Kupinsky a Visiting Assistant Professor and Uihlein Fellow in Studio Art at Lawrence University where she teaches ceramics and foundations.  
[www.debbiekupinsky.com](http://www.debbiekupinsky.com)

## MI MUD 2011 - Presenters



**NICOLE MARROQUIN** received her MFA from University of Michigan and her BFA from Eastern Michigan University. She is Assistant Professor of Art Education at School of the Art Institute of Chicago.

Recently, she collaborated with V. Robin Grice in "Bi-Lingual." To get a sense of their work/style, they have written about the process: "This collaborative installation is a part of an ongoing conversation between two artists about the multi-dimensional realities and requirements of being women of color in contemporary American society. Through the figure and various constructed objects, we're attempting to locate the everyday realities of patriarchy, racism, and class bias, and to connect these systems of oppression to our particular stories of girlhood, family relationships, and work life. While telling different stories, our goal is to explore what it means to be marginalized and to imagine and acknowledge the possibilities for true diversity."

[www.nicolemarroquin.com](http://www.nicolemarroquin.com)



**GREG STAHLY** started in clay working for Dick Lehman at his pottery in Goshen, Indiana in 1997, the same year he began his undergraduate studies at Goshen College under Marvin Bartel. Throughout his undergraduate career he focused primarily on wheel thrown vessels and atmosphere firing processes (both soda vapor and wood). In 2002 Greg began his graduate studies at Indiana University under the guidance of John Goodheart, Tim Mather, Malcolm Mobutu Smith, and Christyl Boger. It was during this time that Greg began working primarily in sculpture, making mixed media work based on industrial and scientific systems and structures. For the past 6 years Greg has been working on a body of work based on the alteration of the natural environment, specifically relating to industrial sites and systems that are involved in the harnessing and transferral of natural resources. Since 2006, Greg has been an Assistant Professor of Ceramics at Central Michigan University. [stahl1gb@cmich.edu](mailto:stahl1gb@cmich.edu)



**IAN THOMAS** earned his BFA in Ceramics and Painting studies from Slippery Rock University in PA and his MFA from Texas Tech University. A self-proclaimed pluralist, his research explores traditional and non-traditional ceramics, sculpture, printmaking, painting, and installation. Ian has also studied at the Academy of Fine Art in Bratislava, Slovakia and had a residency in Jindezhen, China. He exhibits and conducts workshops nationally and will be demoing large platter (30"-40") construction on the wheel and utilizing different image transfer techniques (screen printing, low-tech litho, newspaper transfer, etc.)). He will construct hand-built sculptures using the platters and a frame. [www.ianfthomas.com](http://www.ianfthomas.com)



---

## MCAA Scholarship Winners 2011

The Michigan Ceramic Art Association board is pleased to announce the winners for the **2011 MCAA Scholarship Award**. Winners, **Melissa Dembinski** and **Brent Westrick** received \$500 each.

**Melissa Dembinski** is currently a student at Central Michigan University. She will graduate in 2012 with a Bachelor's of Science in Visual Arts Education concentrating in Ceramics.

**Brent Westrick**, is currently a student at Grand Valley State University. He is seeking a BFA degree in Ceramics and will graduate in 2011.

This award is intended to encourage students who desire a career in ceramic arts or ceramics industries, to further their ceramics education. Student works were judged on talent, skill, inventiveness, originality, craftsmanship, form and subject(s).



Melissa Dembinski



Brent Westrick

### CALL FOR 2012 APPLICATIONS

The Michigan Ceramic Art Association is seeking candidates for the 2012 MCAA Scholarship Award. The number of students that will be chosen to receive these awards will be at the MCAA Governing Board's discretion. Winners will receive **\$1000** each.

This award is to encourage students to further their ceramics education. To be eligible, a student must be enrolled for the Fall 2012 semester at a post-secondary institution within the state of Michigan. We are looking for students who desire a career in ceramic arts or ceramics industries, and/or the teaching of ceramics arts.

Students will be judged on completed works only. The Governing Board will view digital images of a student's work, review their statement of need, and letter(s) of recommendation. Works shall be judged on talent, skill, inventiveness, originality, craftsmanship, form and subject matter. All judgments will necessarily be decisions by the Governing Board and are final.

For scholarship application form, go to: [www.michclay.com](http://www.michclay.com). The application must be received no later than **April 30, 2012**. Include 4 or more digital images of your best ceramic art work as directed in the application.

Applicants will be notified by **June 1, 2012**. Please note that all images must be received in electronic form for your application to be considered. Please direct questions to: [MCAAscholarship@umich.edu](mailto:MCAAscholarship@umich.edu)

Mail applications to:  
**Jeri Hollister**  
801 Amherst Ave.  
Ann Arbor, Mi 48105

Contact:  
734-761-1971  
[MCAAscholarship@umich.edu](mailto:MCAAscholarship@umich.edu)

## MI Mud 2011 - GENERAL Registration

(Students/Faculty see page 8)

**October 7 & 8, 2011 (9:00 AM – 4:00 PM each day)**

Washtenaw Community College, 4800 E. Huron River Dr., Ann Arbor, Michigan

**Mail in this form and pay with check**

One registration form per individual.

PLEASE PRINT

*Space at the conference is limited.*

Name: \_\_\_\_\_

Address: \_\_\_\_\_

City: \_\_\_\_\_ State/Zip Code \_\_\_\_\_

Phone: \_\_\_\_\_ Email: \_\_\_\_\_

Institution affiliation if applicable (School, Gallery, Guild, Business) \_\_\_\_\_

Your Position at Institution: \_\_\_\_\_

**1. Two-Day MEMBER Registration (Friday & Saturday \*\*lunches included)**

Full Conference Registration \$100 per person \_\_\_\_\_

**2. One-Day MEMBER Registration Fee (please check which day -\*\* lunch Included)**

1. Friday ONLY Sessions \_\_\_\_\_ \$60 per person per day \_\_\_\_\_

2. Saturday ONLY Sessions \_\_\_\_\_ \$60 per person per day \_\_\_\_\_

**Not a member? Add Membership fee as below \*\* minimum \$25**

Registrations postmarked after Sept 15, 2011 add \$20 per person \_\_\_\_\_

**Total amount enclosed** \_\_\_\_\_

**3. I would like to sign up for the Brush-Making workshop.**

- Please indicate your preference Friday \_\_\_\_\_ OR Saturday \_\_\_\_\_

**Note:** Materials cost for "Brush Making Workshop" \$10 paid to the instructor at workshop.

Space Limited, first 20 to register each day, additional requests will be added to a wait list.

You will be notified regarding placement in workshop.

**4. \*\*Vegetarian Lunch please \_\_\_\_\_ Is this your first MI Mud Yes \_\_\_\_\_ No \_\_\_\_\_**

**5. I will donate cup/s to MI MUD 2011 scholarship fundraiser sale. Please indicate how many \_\_\_\_\_**

**\*\*MCAA Membership (one-year) to include above if you are not a current member**

\_\_\_\_\_ Individual \$25.00 \_\_\_\_\_ Family (2 only) \$30.00 \_\_\_\_\_ Institutional \$100 (College, University, Guild or Business)

**INSTITUTIONAL MEMBERSHIP INCLUDES:**

One-institutional representative at MCAA Events

Link on MCAA website to institution's website

Ceramics related classified ads for institution on MCAA website

Table space provided at MI Mud Conferences to promote organization, subject to available space

**Please make check payable to MCAA and send with this form to:**

MCAA c/o Barbara Svagr

1535 Northumberland, Rochester Hills, MI 48309

(248) 375-9956

Email: [bsvagr@gmail.com](mailto:bsvagr@gmail.com)

**No refunds after September 15, 2011**

For Office Use: Check # \_\_\_\_\_ Date received: \_\_\_\_\_

# MI Mud 2011 - College/High School/Faculty Registration

**OCTOBER 7 & 8, 2011 (9:00 am - 4:00 pm each day)**

Washtenaw Community College, 4800 E. Huron River Dr., Ann Arbor, MI 48105

**Full Time College Student/Faculty Advisor or High School Students/Faculty Chaperone**

*Students enrolled full time at a college, community college or university and their accompanying faculty advisor may use this application form. Please enclose your full time schedule.*

**For High School conference participants:**

This form must be filled out by the faculty chaperone. In addition to the name of the person who will be accompanying the students, a list of the student names attending must be attached.

Each additional accompanying faculty member attending should fill out their own registration form.

PLEASE PRINT

Space at the conference is limited

Name: \_\_\_\_\_

Permanent Address \_\_\_\_\_

City: \_\_\_\_\_ State/Zip Code \_\_\_\_\_

Phone: \_\_\_\_\_ Email: \_\_\_\_\_

School: \_\_\_\_\_ Department \_\_\_\_\_

Your Position at the college or school: \_\_\_\_\_

**FEES below include lunch.**

1. **Two-day** registration fee for Full Time Student (as above) and/or Full Time Faculty
    - Friday & Saturday Sessions @ \$40 per person \_\_\_\_\_
  2. **One-day** only fees
    - Friday Session ONLY \$25 per person \_\_\_\_\_
    - Saturday Session ONLY \$25 per person \_\_\_\_\_
  3. **Not a MCAA Member, join now**
    - Individual Adult \$25  or Student \$18  \_\_\_\_\_
- Total Amount Enclosed** \_\_\_\_\_

4. **I would like to sign up for the Brush-Making workshop.**
  - Please indicate your preference: FRIDAY  or SATURDAY

**NOTE:** \$10 materials cost for "Brush Making Workshop" is paid to the instructor at workshop. Space is limited to first 20 to register each day. Additional requests will be added to a wait list. *You will be notified regarding placement in workshop.*

5. **Vegetarian Lunch please**
6. **Is this your first MI Mud?** Yes  No

**Please make check payable to MCAA and send with this form to:**  
MCAA c/o Barbara Svagr  
1535 Northumberland, Rochester Hills, MI 48309  
(248) 375-9956 or Email: bsvagr@gmail.com

**No refunds after September 15, 2011**

For Office Use: Check # \_\_\_\_\_ Date received: \_\_\_\_\_

## MCAA MEMBER ANNOUNCEMENTS



Little Monsters  
**ARTIST OF THE MONTH**



**Craig Hinshaw**

# PLATES

**Flint St. Gallery**

(inside Little Monsters)

16 W. Flint St., Lake Orion, Michigan

Show runs May 30 to July 30, 2011

[www.craighinshaw.com](http://www.craighinshaw.com)

Mr. Hinshaw is an elementary art teacher in the Lamphere School District in Madison Heights, Michigan. He has a Master of Fine Art Degree from Cranbrook Academy of Art and a Bachelor of Science Degree from Ball State University. Craig is married to a teacher and has two grown daughters.

Craig's passions teeter between teaching children and doing his own clay work. He was voted Michigan Art Teacher of the Year the same year he showed his ceramic work in a New York City gallery. Craig has written dozens of articles for School Arts, Arts and Activities and Pottery Making Illustrated magazines. He has been awarded an Arts Midwest Fellowship for his clay work and has received numerous teacher grants including the Jordan Fundamental Grant and Palm Education Pioneer Grant. Craig's interests in Asian and Pre-Columbian ceramics have led him to travel throughout China, Japan and Korea as well as Oaxaca, Mexico, Costa Rica and Peru.



# ROMANTIC ROBOTS AND OTHER LIFE FORMS

*Presented by*

The James Pearson Duffy Department of Art and Art History's and The Elaine L. Jacob Gallery at Wayne State University

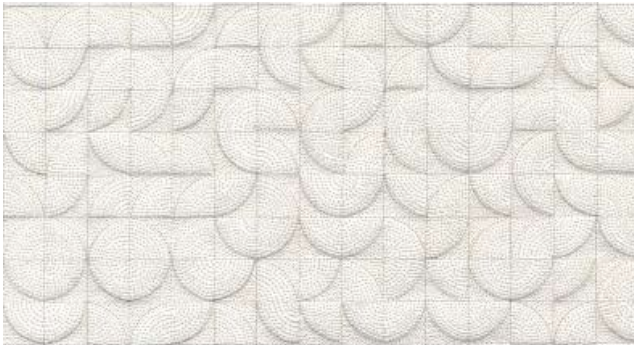
Blades of grass in a field, products arranged in the grocery store, bricks stacked to form walls, individual units are repeated ad infinitum and compose the texture of much of our world. Whether man-made or organic, designed or grown, multiple units evoke the unstoppable forces of nature, the obsession of the maker, and the mass production in our society. Repetition of form inspires a repetition of process, while raising questions about matter produced and disposed in both nature and our culture. Through our own handmade assembly lines we question the value of the object and seek to create something new through repetition and rhythm. A dance ensues that vacillates between an object's fragmentation and its accumulation into something distinctive, creating a unique and synergistic dialogue. We investigate the obsession of process, the relationship between individuals and networks, our corporeal relationship to technology, as well as the mystery of nature, and create meaning from new forms emerging from multiple objects. - The Romantic Robots

ROMANTIC ROBOTS is a group featured on the lower level of the gallery that includes the following artists: Frederick Bartolovic, Lauren Herzak-Bauman, Kimberly Greene, Jim Hake, Casey McDonough, Robin Strangfeld and Blake Williams.

The upper level of the gallery features works by Gina Alvarez, Diana Baumbach and James Thurman. The exhibition's opening reception is on Friday, June 3, from 5:00 to 8:00 PM. It is free and open to the general public. The Elaine L. Jacob Gallery is located in Old Main on the campus of Wayne State University, near the intersection of Hancock and Second Street. Metered street parking is available, and is free after 6:00 PM.

The James Pearson Duffy Department of Art and Art History is a division of Wayne State's College of Fine, Performing and Communication Arts, educating the next generation of visual artists, designers and art historians. Wayne State University, located in the heart of Detroit's midtown cultural center, is a premier urban research university offering more than 350 academic programs through 13 schools and colleges to more than 31,000 students.

For more information, contact Tom Pyrzewski at [tpyrzewski@wayne.edu](mailto:tpyrzewski@wayne.edu) or 313-577-0770



ROMANTIC ROBOTS AND OTHER LIFE FORMS



## Elaine L. Jacob Gallery

James Pearson Duffy Department of Art and Art History  
Wayne State University  
480 West Hancock, Detroit, MI 48201  
(313) 993-7813  
[www.art.wayne.edu](http://www.art.wayne.edu)

## ROMANTIC ROBOTS

(featured on the lower level of the gallery)

**ROMANTIC ROBOTS** is a group that includes the following artists:  
**Frederick Bartolovic, Lauren Herzak-Bauman, Kimberly Greene, Jim Hake, Casey McDonough, Robin Strangfeld and Blake Williams**

**Gina Alvarez Diana Baumbach James Thurman**

(featured on the upper level of the gallery)

**June 3 through July 29, 2011**

**Opening Reception: Friday, June 3, 5-8PM**



Gallery Summer Hours: Tuesdays through Fridays, 12PM-5PM

WAYNE STATE UNIVERSITY

Artwork on front:  
Detail from *Untitled* Drawing by Diana Baumbach (top)  
Detail from *Nonish* by Blake Williams (bottom)

## WELCOME NEW MCAA INSTITUTIONAL MEMBERS



[www.firebrickgalleryandpotterystudio.com/](http://www.firebrickgalleryandpotterystudio.com/)

404 S. Main Street, Rochester, MI 48307

Phone: (248) 650-2500

[christine@firebrickgalleryandpotterystudio.com](mailto:christine@firebrickgalleryandpotterystudio.com)

### About Firebrick Gallery and Pottery Studio:

Firebrick Gallery and Pottery Studio is an art gallery, gift shop, and studio. Our Gallery showcases exclusively Michigan emerging and established artists, including pottery, photography, oil and acrylic paintings, mixed media, jewelry and more.

Our gift shop features note cards, outdoor and home decor, jewelry, and other items, all made from Michigan artists.

Firebrick Gallery and Pottery Studio is also a fully equipped pottery studio, school and practice space for beginners and ceramic artists.

We offer courses, workshops, and private tutoring for introductory and intermediate students. Our generous community open studio workspace is available to students and experienced ceramic artists.

Call to Michigan Artists:

Will be accepting applications for internships in the Fall 2011. Send e-mail to Christine Laikind regarding to internships opportunities at Firebrick Gallery and Pottery Studio.  
[claikind@gmail.com](mailto:claikind@gmail.com)



## ASSEMBLAGES



**BONNIE MILJOUR & MONICA WILSON**

## ASSEMBLAGES

**Show: August 1 – 28, 2011**

Public Reception: August 5, 2011, 6 – 8 pm

### CLAY GALLERY

335 South Main Street, Ann Arbor, MI

Summer Hours: Monday – Thursday, 11am - 8 pm

Friday, Sat 11am - 9 pm • Sunday 12-5 pm

[www.claygallery.org](http://www.claygallery.org)

734/662-7927

## MCAA MEMBERSHIP

### MEMBERSHIP SERVICES

To fulfill its mission throughout the state, the **Michigan Ceramic Art Association** sponsors exhibitions, workshops, and lectures in partnership with other organizations. These cover a wide range of subjects from ceramic techniques and history to running a business.

MCAA sponsors a biennial juried competition, **MCAA MI Ceramics**. This exhibition celebrates the work of ceramic artists throughout the state. A nationally known clay artist juries the show and awards prizes in several categories representing the diversity within ceramic expression.

Our second major biennial event is **MI Mud**. This two-day educational conference features demonstrations, exhibitions, slide lectures, and discussions. A nationally celebrated ceramic artist is invited, as well as several prominent Michigan artists and teachers, to demonstrate and lecture.

#### Institution Membership Services:

- Link on MCAA website to institution's website
- Ceramic related ads for institution on MCAA website
- Table provided at MI Mud Conferences to promote organization (space available)
- One-institution representative membership

MCAA publishes a **quarterly e-newsletter** along with **electronic updates** to serve as a communication network for artists, students, educators, art organizations and all connoisseurs of the ceramic arts. As the Michigan Ceramic Art Association evolves, our organization continues to fulfill our mission to serve the ceramic community of Michigan.

## join MCAA today!

Membership and volunteer opportunities are open to all interested in the ceramic arts.

Annual dues are as follows:

- Individual \$25
- Family \$30
- Full Time Student \$18  
(Copy of class schedule required)
- Patron \$50 and up (tax-deductable donation)
- Institution \$100 (College, University, Guild, Business)

Total amount: \$ \_\_\_\_\_ Ck # \_\_\_\_\_

Name \_\_\_\_\_

Address \_\_\_\_\_

City \_\_\_\_\_ State \_\_\_\_\_ Zip \_\_\_\_\_

E-mail Address \_\_\_\_\_

Phone Number \_\_\_\_\_

Please tell us about yourself:

Hobbyist    Professional    Instructor

Student   Years of experience \_\_\_\_\_

What is your major area of ceramic interest?

*Mail application & dues (payable to MCAA) to:*

**MCAA** c/o Membership Chair  
1535 Northumberland Drive  
Rochester Hills, MI 48309-2959

*For more information contact:*

**Barbara Svagr**  
(248) 375-9956

**bsvagr@gmail.com**

Download membership application at:  
**www.michclay.com**

## MCAA Officers

**President:**

John Leyland ..... (734) 763-4199  
E-mail ..... jleyland@umich.edu

**Vice President:**

Blake Williams ..... (517) 281-5576  
E-mail ..... blakejw13@hotmail.com

**Vice President:**

Jim Adair ..... (248) 202-8716  
E-mail ..... james.adair2@gmail.com

**Secretary:**

Chyrs Bonnay-Lewis ..... (313) 822-0954  
E-mail ..... chrysbonnaylewis@yahoo.com

**Treasurer:**

Charlene Harris ..... (734) 433-9773  
E-mail ..... charlene@charleneclayart.comt

**Membership:**

Barbara Svagr ..... (248) 375-9956  
E-mail ..... bsvagr@gmail.com

**E-Newsletter/graphics:**

Joanne Daniels ..... (517) 223-9138  
E-mail ..... daniels1@earthlink.net

## MCAA e-newsletter

Send news for inclusion in the e-newsletter to:

**Joanne Daniels**  
daniels1@earthlink.net

Send membership dues and inquiries to:

**Barbara Svagr**  
1535 Northumberland Drive  
Rochester Hills, MI 48309-2959  
(248) 420-3922  
bsvagr@gmail.com

Membership rates:

Individual	\$25
Family	\$30
Full time Student	\$18
Patron	\$50 & up
Institution	\$100

Send web information and inquiries to:

**Wade Harris**, Web Master  
wade@wadephoto.net

[www.michclay.com](http://www.michclay.com)